

# CHS Controls

---

## The fuse emergency room



I have an unusual fuse in the machine.....

Recognized? The fuse has done its job and shall be replaced.  
But - **it is not a standard fuse!**

***Ask CHS Controls about special fuses...***

The fuse - the component that protects most circuits. One of the most important for electrical safety. A component that is not always noted. It is installed and it does its job. When the job is done, it shall be replaced - with a fuse of right size and type.

*" We assist with cross references between fuses from different manufacturers. We have more than 25 years of experience of fuses, applications, selection, sizing, upgrading and technical support."*

There is a great variety of fuses, manufactured according to many international standards and to protect different types of equipment. Two fuses can, at the first glance, look similar but the electrical characteristics may be quite different - wrong replacement fuse may result in a disaster.

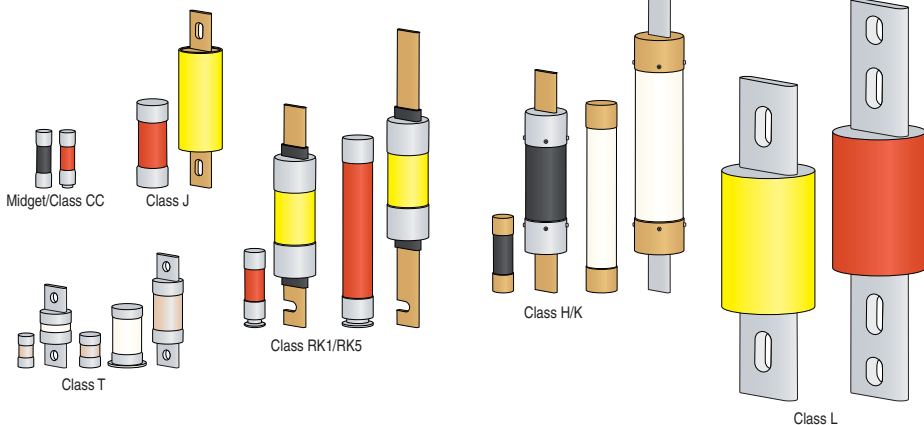


## Welcome to the fuse emergency room.....

### North American standard fuses

Export to North America requires North American fuses, installed according to North American rules, with UL and CSA approval. Machines delivered from North America are usually equipped with the

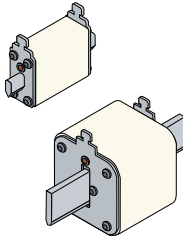
same type of fuses. North American fuses are well standardized, manufacturer is less important. We stock the most common types and sizes.



### General industrial fuses

Beside NH knife style fuses and Diazed fuses other types are available, like ferrule fuses according to French standard or fuses according to British standard - BS 88. The fuses are normally electri-

cally equivalent with the same utilization classes, for example gG for cable protection and aM for motor protection. We offer a wide range of fuses and fuseholders - standard and special.



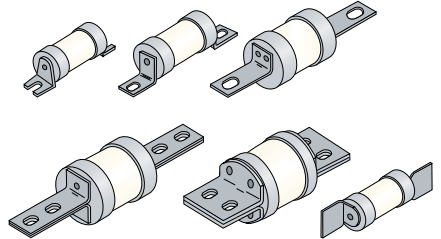
NH solid blade fuses  
DIN43620



Neozed/Diazed fuses  
D01-03/DI-DV



Cylindrical fuses, French standard  
8x31/10x38/14x51/22x58 mm

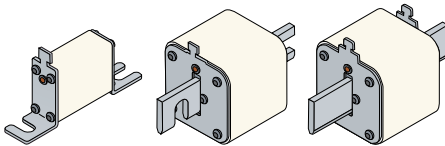


Fuses according to BS88-1&2/6

### High speed fuses

Semiconductors in softstarters, adjustable frequency drives and rectifiers are sensitive - the best protection is to use high speed fuses. To replace a high speed fuse with a standard fuse may not only result in equipment damages, also personal damages may occur.

High speed fuses are available in many versions, cylindrical fuses, square body fuses, termination via knife blades, slotted blades or as end contacts. Also Diazed and Neozed fuses are available as high speed fuses. We help you to find the proper type of fuse.



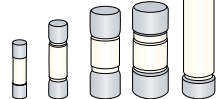
Square body fuses  
slotted L-contact blade  
DIN 43653

Square body fuses  
slotted contact blade  
DIN 43653

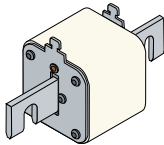
Square body fuses  
Solid blade DIN 43620



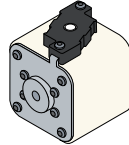
Neozed/diazed fuses  
D01-03/DI-DV



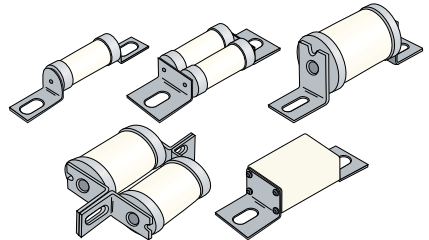
Cylindrical fuses  
10x38/14x51/22x58/27x60/20x127 mm



Square body fuses  
Slotted contact blade according  
to French standard



Square body fuses  
Flush end contact

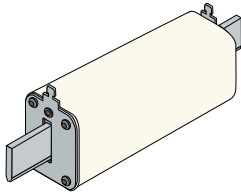


Fuses according to BS88-4

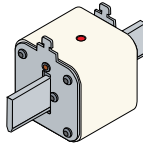
## Fuses for photovoltaic and battery storage protection

The unique nature of photovoltaic installations is a challenge for the fuse. They must be suitable for DC and capable of interrupting low overcurrent's associated with faulted PV strings. Fuses with utilisation class gPV are especially designed for photovoltaic protection.

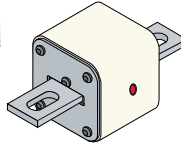
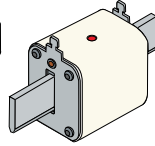
Battery storage protection fuses must also be suitable for DC. Different types of batteries, charging/discharging profiles must be taken into consideration when selecting the fuse. Fuses with utilization class gBat are especially designed for battery protection.



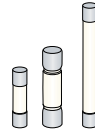
NH solid blade fuses  
XL fuse body



NH solid blade fuses  
DIN 43620



NH fuses, contact  
blade for bolt connection



Cylindrical fuses  
10x38/14x51/10\*85 mm

### *More than 25 years of experience of fuses.....*

We have more than 25 years of experience of fuses, applications, selection, sizing, upgrading and technical support. We assist with cross references between fuses from different manufacturers.

***Safe - effective - easy!***

**CHS Controls AB**  
Florettgatan 33  
SE-254 67 Helsingborg, Sweden  
Phone +46 42 386100  
chs@chscontrols.se  
www.chscontrols.se